



## Remote Fill and Spill Containment

HT-1087

During bulk transfer and delivery operations, small amounts of fuel are spilled. Petroleum, even in small amounts, is harmful to the environment. To contain these spills, Highland Tank offers a variety of spill containment devices to accommodate most fueling operations.

### Tank filling containment options include:

- Tank-top mounted spill bowls
- Mounted to tank head or shell with pipe connections to tank top
- Remote or separated from the tank with pipe connections to tank top
- Integral containment (fabricated into the tank)

Spill containment chambers with or without locking lids are available and can be customized to meet your needs.

### Features

- Tank-top, side/end mount and remote installations
- 3.5, 5 & 7.5 gallon capacity tank-top
- 10 & 15 gallon side/end & remote
- Lockable hinged cover/lid/door
- Male and female threaded connections
- Integral drain assembly

### Construction

#### Tank-top style

- Powder-coated steel or aluminum
- Temperature and chemical resistant drain o-ring

#### Cabinet style

- Powder-coated or stainless steel
- Mounting tabs, adjustable column or support legs

#### Integral Style

- Minimum steel thickness - 12 gauge
- Diameter and height determined by required spill capacity
- Seal-welded to tank
- Inside and outside coating same as tank

# Stainless Steel Remote Fill Cabinets

Highland Tank's Remote Fill Cabinets are fabricated from 14-gauge 304 stainless steel and employ high-quality components on the inside for long-term, reliable service.

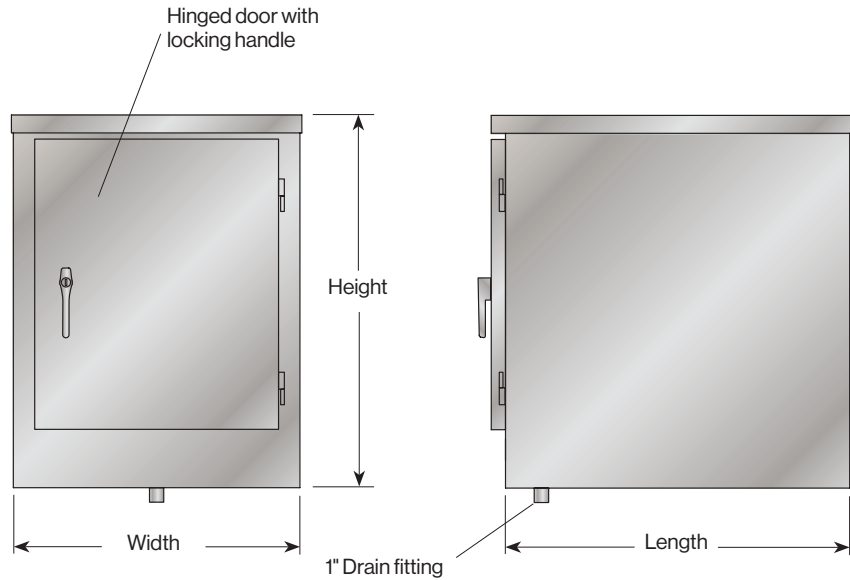
Remote Fill Cabinets are available in a variety of configurations for 2", 3", and 4" pumping connections with or without vapor recovery equipment. Standard configurations also include a 2" dual-port cabinet with vapor recovery.

Highland Tank excels at custom fabrication to meet the needs of our clients. Please contact us to discuss your specific site requirements.

RF Size	Nominal Overall Dimensions			Access Opening	
	Length	Width	Height	Width	Height
2"	24"	20"	25"	16"	18"
3"	24"	20"	25"	16"	18"
4"	28"	24"	25"	16"	18"

## Options

- Drain valves
- Small hand pump for returning any spilled product to the tank
- Flanged connections

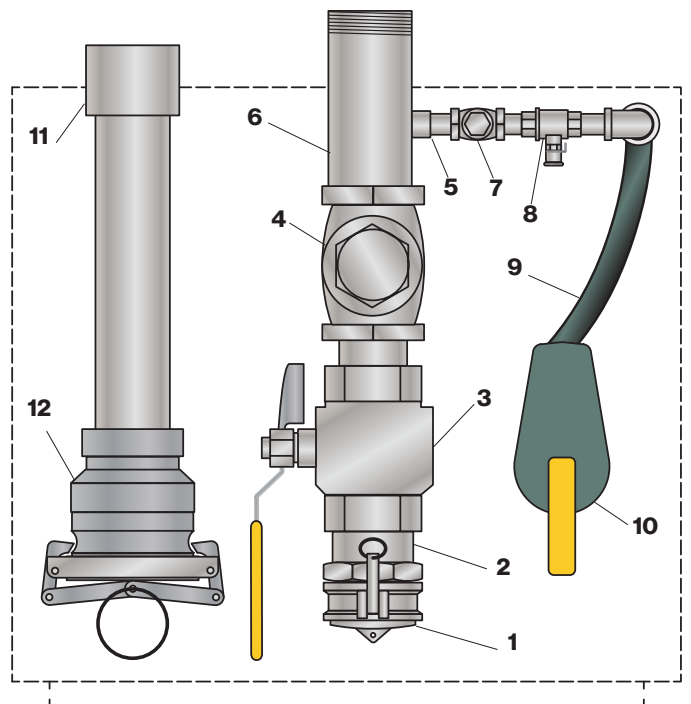


Highland Tank fabricates and assembles our Remote Fill Cabinets completely at our factories. Cabinets are delivered ready for installation with minimal additional site work required.

What's inside the box:

- 1 - Dust cover
- 2 - Quick disconnect - female
- 3 - Ball valve
- 4 - Check valve
- 5 - Coupling
- 6 - Male NPT pipe connection
- 7 - Check valve
- 8 - Ball valve
- 9 - Transfer hose
- 10 - Lever hand pump
- 11 - Female NPT pipe connection
- 12 - Vapor recovery adapter with cap

Plan view of 3" cabinet with vapor recovery



# Powder-coated Steel Spill Bowls

## Top-fill Containment

Spill bowls and remote fill cabinets help prevent harmful fuel spills from reaching the ground and harming the environment.

Spill bowls are available in three convenient sizes and are configured with 2" to 4" male or female NPT connections to accommodate most fuel delivery rates.

All spill containment devices are lockable and can be fitted with quick-connect adaptors to work seamlessly with delivery equipment. Offset connections are available on 5 and 7.5-gallon models as a space-saving feature.

A small hand pump is available for returning any spilled product to the tank. Spill and overfill devices are factory installed and tested prior to shipping.

7.5-gallon spill bowl with space-saving, female NPT off-set connection.



5-gallon spill bowl with female NPT connection in center of bottom



3.5-gallon spill bowl with male NPT connection in center of bottom



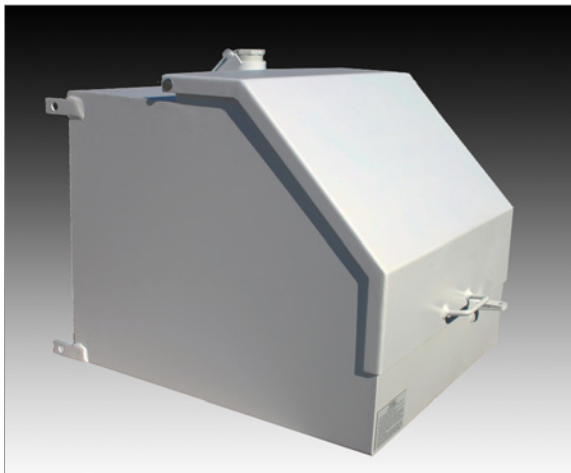
# Powder-coated Steel Remote Cabinets

## Remote Fill Cabinets

Contains small spills that may occur at the fill point during remote filling operations.

- Single connections in 2", 3" or 4" female threads
- Dual connections in 2" or 3" (may be combined)
- Spring cylinder holds lid while fueling
- Lockable
- Weather-tight
- Vent cover
- 2 Inch female threaded return pump connection
- 1" NPT drain with locking ball valve

Tank-mount 10-gallon capacity remote fill cabinet. Bottom of cabinet is sloped toward drain and pump mounting location. Vapor recovery mounting bracket integrated into the cabinet exterior.



Post-mounted 15-gallon capacity remote fill cabinet. Bottom of cabinet is sloped toward drain and pump mounting location. Vapor recovery mounting bracket integrated into the cabinet exterior. Also available with a 4-leg adjustable stand support system.



# Highland Tank®

### Stoystown, PA

One Highland Rd.  
Stoystown, PA 15563  
(814) 893-5701

### Manheim, PA

4535 Elizabethtown Rd.  
Manheim, PA 17545  
(717) 664-0600

### Watervliet, NY

958 19th St.  
Watervliet, NY 12189  
(518) 273-0801

### Greensboro, NC

2700 Patterson St.  
Greensboro, NC 27407  
(336) 218-0801

### Friedens, PA

1510 Stoystown Rd.  
Friedens, PA 15541  
(814) 443-6800

### Clarkston, MI

4701 White Lake Rd.  
Clarkston, MI 48346  
(248) 625-8700

### Mancelona, MI

9517 Lake St.  
Mancelona, MI 49659  
(231) 587-8412

