

## LevelShield P Series

HT-6117

### Liquid Inventory Management

LevelShield P Series is an inventory monitoring and management system for liquid products, like fuel. This system helps to keep your liquid assets secure by providing accurate and reliable data including fuel and water levels, and temperature monitoring.

LevelShield's hardware options work seamlessly with the software to eliminate potential human errors when determining tank levels.

High-LINK® is a web-based application that combines data and smart alerts allowing users to efficiently manage liquid inventory from anywhere, anytime, and on any device. With minimal hardware and wiring, the LevelShield system minimizes installation costs.

The probe employs two floats and a temperature sensor to provide product and water levels as well as temperature-compensated volume for accurate inventory reporting.

The CommBox converts and transmits data from the probe to High-LINK® software for analysis. The CommBox also includes audible/visual alarm contacts for interstitial and overflow alarms. The CommBox can be mounted on any vertical surface, indoor or outdoor, and in many environments.

Upon logging in to High-LINK®, each user will have access to run reports and view, print, or export data for highly accurate inventory reconciliation. Time and money will no longer be wasted with traditional tank monitoring systems.



# High-LINK® Peace of Mind 24/7

## How it works

- Real-time data is transmitted to the cloud continuously or around-the-clock level monitoring
- Access data from anywhere every 5 minutes on the High-LINK® platform
- Cell communication works anywhere there is coverage
- Built-in alert functions provide real-time data analysis and help detect fraudulent activity
- Time-saving reports generated and printed from any computer

## Compared to other systems

- Low cost of software and cellular communications vs. buying a new system
- Cloud-based software with included updates and support
- System flexibility
  - Indoor/outdoor mounting, with minimal wiring required
- Low installation cost
- No need for large consoles and/or ticket printers
- GPS antenna included

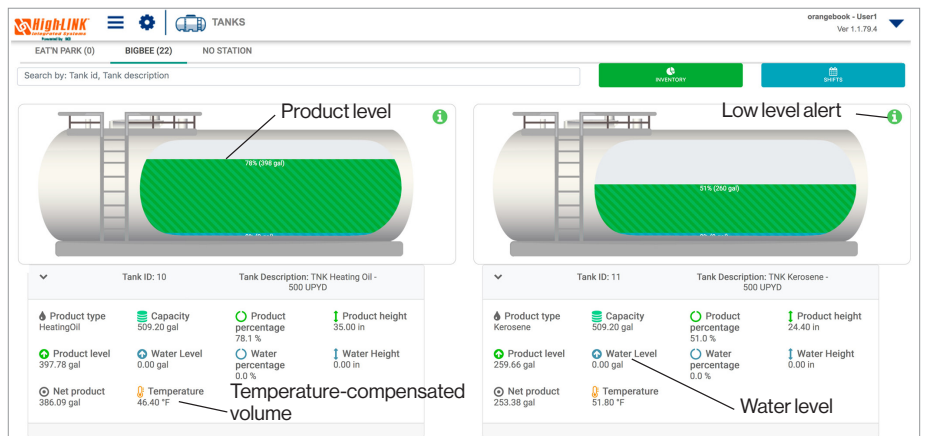
**Utilizing High-LINK® provides years of unmatched monitoring for less upfront cost than a traditional level monitoring system**

## Manage liquid levels from anywhere

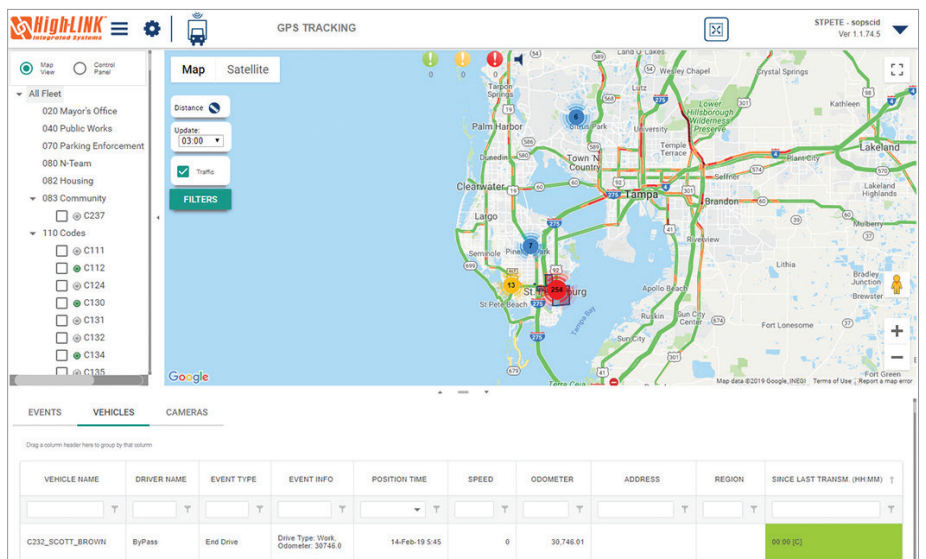
- Save money and increase efficiency
- Analyze data in real time
- Optimize operations
- Continuous water detection in tanks
- Verify physical delivery
- Fully customizable and remotely programmed alerts include: low liquid level, volume pumped and many more
- Auto-generated reports based on user-defined parameters



Updates and alerts on remote equipment data available anytime, anywhere, and on any device.



High-LINK® User Interface Screen



GPS Asset Tracking Screen



## Magnetostrictive Probe

- 2-Floats for level monitoring product & water
- Measuring accuracy up to  $\pm 0.02$ "
- Integrated sensor for temperature-compensated volume monitoring
- RS-485 Wired Communication Standard
- Measuring range along the complete probe length
- Standard lengths of 60" to 167" (Longer probe lengths are available upon request)
- Resolution  $\pm .004$ "
- Environmental:  $-40^{\circ}$  -  $185^{\circ}$ F

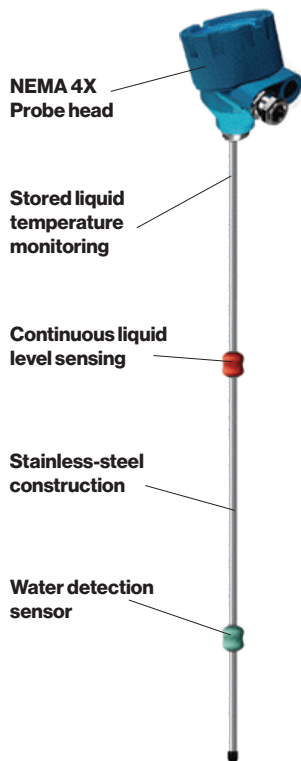
## Physical

- Floats: SP-P for product, SP-A for water
- Stem: 316L stainless steel tubing
- Tank connection: 2" NPT

## Certifications

- Explosion-proof ATEX CESI & IENRIS-OIML R85 (pending)
- Class 1 Division 1&2 (Safer Barrier)
- Class 1 Zone 1&2 (Safer Barrier)

Specifications for magnetostrictive probes only.  
Other level-sensing equipment is available upon request.



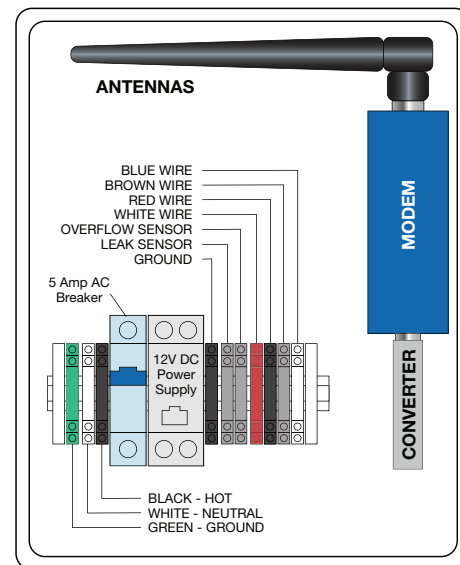
## Comm Box

Standalone tank monitoring system that is easy to install anywhere, including outside or on the side of the tank. Transmits data from the MAG probe eliminating the need for bulky console or receipt printer. Plug-and-play design utilizes 4G cellular technology and operates on 120V single-point power supply.

Connect up to two LevelShield probes with the capability to also serve as an overflow and interstitial alarm panel, complete with two separate alarm relays, lights, and an internal horn.



Depicted below is a view inside the box.



**Stoystown, PA**  
One Highland Rd.  
Stoystown, PA 15563  
(814) 893-5701

**Manheim, PA**  
4535 Elizabethtown Rd.  
Manheim, PA 17545  
(717) 664-0600

**Watervliet, NY**  
958 19th St.  
Watervliet, NY 12189  
(518) 273-0801

**Greensboro, NC**  
2700 Patterson St.  
Greensboro, NC 27407  
(336) 218-0801

**Friedens, PA**  
1510 Stoystown Rd.  
Friedens, PA 15541  
(814) 443-6800

**Clarkston, MI**  
4701 White Lake Rd.  
Clarkston, MI 48346  
(248) 625-8700

**Mancelona, MI**  
9517 Lake St.  
Mancelona, MI 49659  
(231) 587-8412

